

Snapshot: Impacts of COVID-19 on St. Tammany

*15 graphs that show how St. Tammany has
been changed by COVID-19*



The AnalyST

St. Tammany Corporation's economic research publication

July 24, 2020



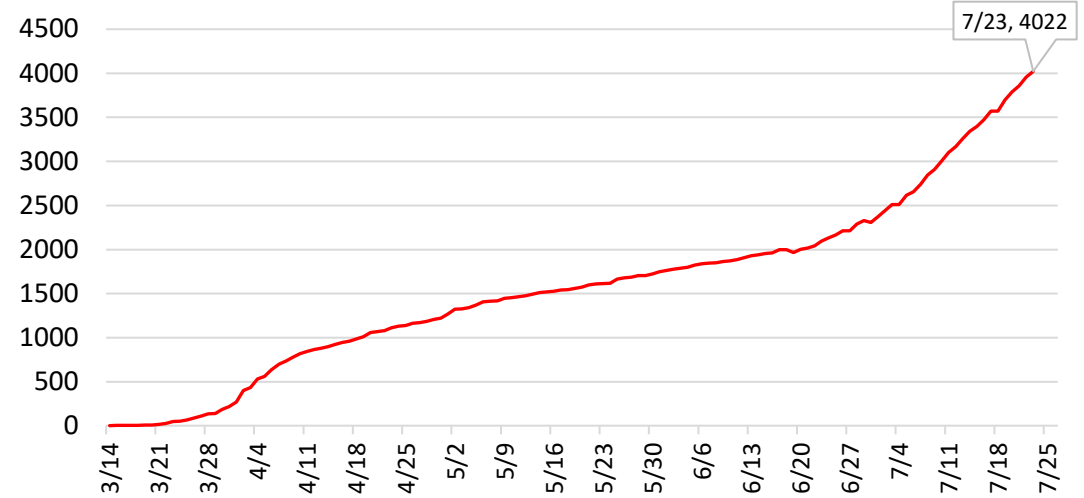
COVID-19 in St. Tammany

Cases

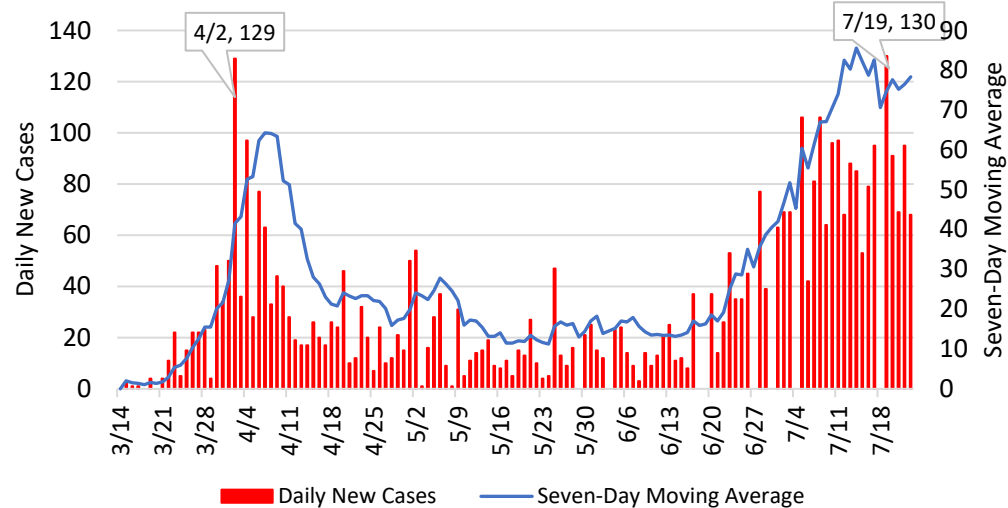
As of July 23, 2020:

- **4,022** positive cases
- **59,761** tests administered
- **6.7%** positive test rate

St. Tammany Total Confirmed COVID-19 Cases



Daily New Cases with Seven-Day Moving Average



- **1,541** cases per 100,000
- **7th highest** number of positive cases in Louisiana
- The **seven-day moving average** is simply the average number of new cases per day for the previous seven days, used to indicate short-term trends.

Source: Louisiana Department of Health



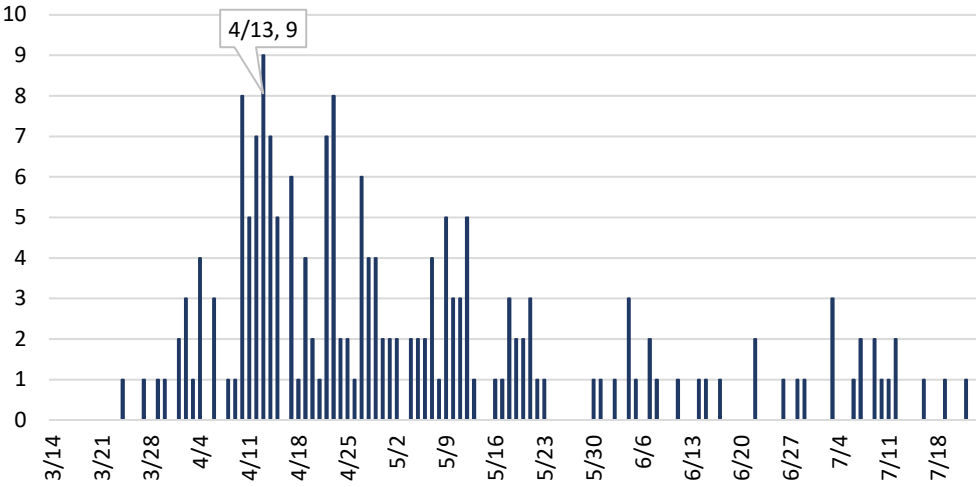
COVID-19 in St. Tammany

Mortality

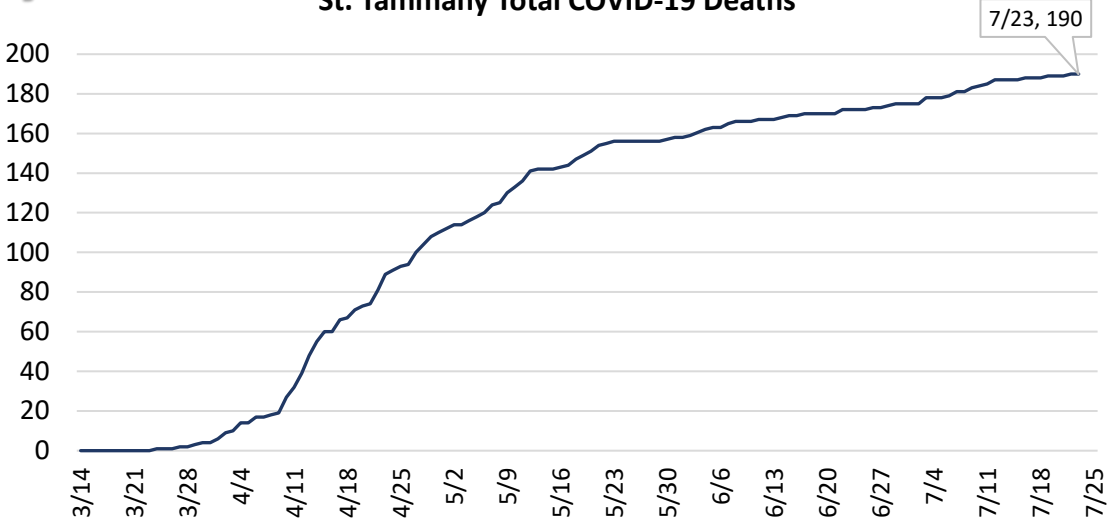
As of July 23, 2020:

- **190** deaths
- **4.7%** mortality rate
- **5th highest** number of COVID-19 deaths in Louisiana

St. Tammany Daily Increase in COVID-19 Deaths



St. Tammany Total COVID-19 Deaths



Demographic Breakdown

Race	Deaths	Cases	Population (2018)	Cases per 1,000
Black	28	709	32,238	19.6
White	161	2521	215,496	9.6
Other	1	260	10,377	20.5
Unknown	0	312	N/A	N/A

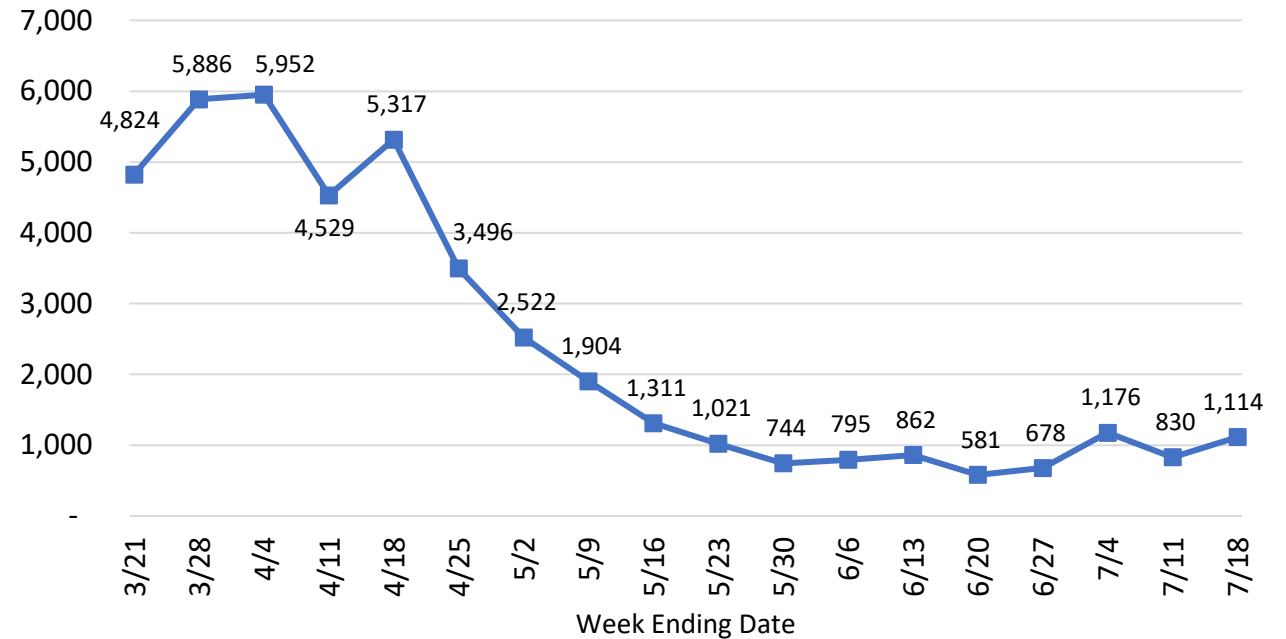
Source: Louisiana Department of Health



Unemployment

- According to data from the Louisiana Workforce Commission, St. Tammany's labor force contracted from 118,839 in May 2019 to 110,918 in May 2020, a difference of **7,921**.
- This could be because many workers who lost their jobs during the pandemic-induced economic downturn are not actively looking for employment and are therefore no longer counted as "unemployed;" they have left the labor force.
- However, St. Tammany's labor force did increase from April 2020 to May 2020, adding back **4,032** workers.

St. Tammany Weekly Initial Unemployment Insurance Claims



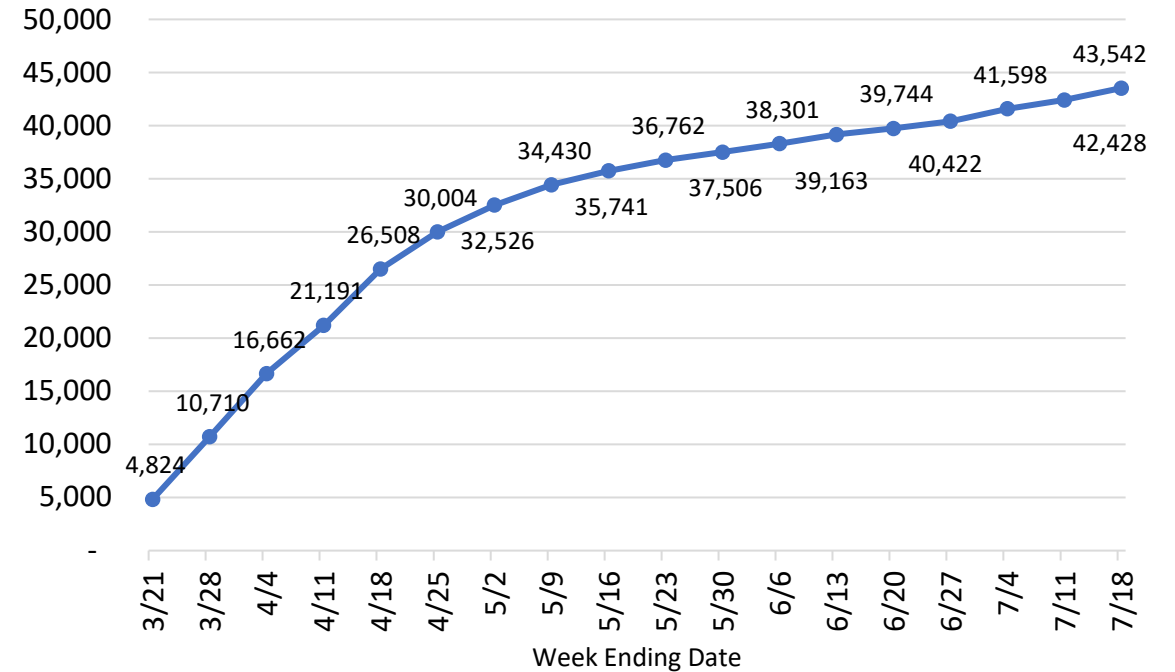
Source: Louisiana Workforce Commission



Unemployment

- As demonstrated on the previous page, the number of weekly initial claims has mostly continued to decline, which has led to a flatter curve for the number of total claims filed in St. Tammany.
- **43,542** total initial unemployment insurance claims means that **more than 35%** of the workforce has been unemployed at some point since the stay-at-home order began.
- St. Tammany's total number of initial claims is the **5th highest** in the state.

St. Tammany Cumulative Initial UI Claims



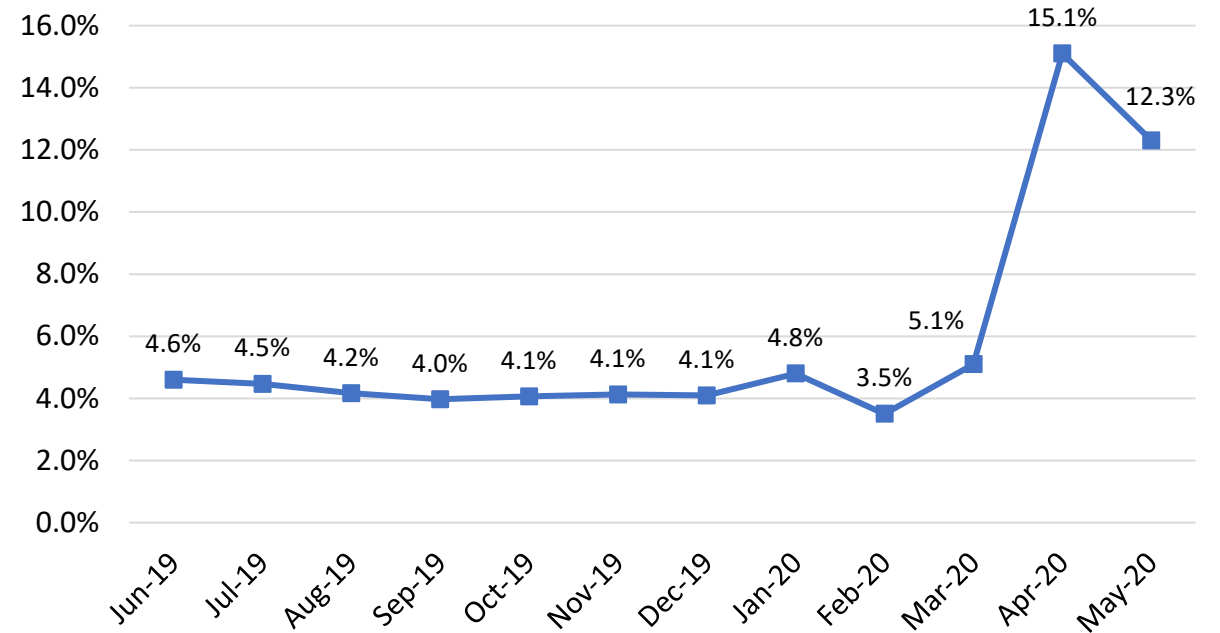
Source: Louisiana Workforce Commission



Unemployment

- LWC reported that St. Tammany's unemployment rate was **12.3%** in May, lower than the national rate (13.0%), the Louisiana rate (13.1%) and the Greater New Orleans rate (16.4%).
- As of July 18, 2020, St. Tammany's unemployment rate is an estimated 12.5% based on continued claims plus initial claims for the preceding week.

St. Tammany Unemployment Rate



Source: Louisiana Workforce Commission

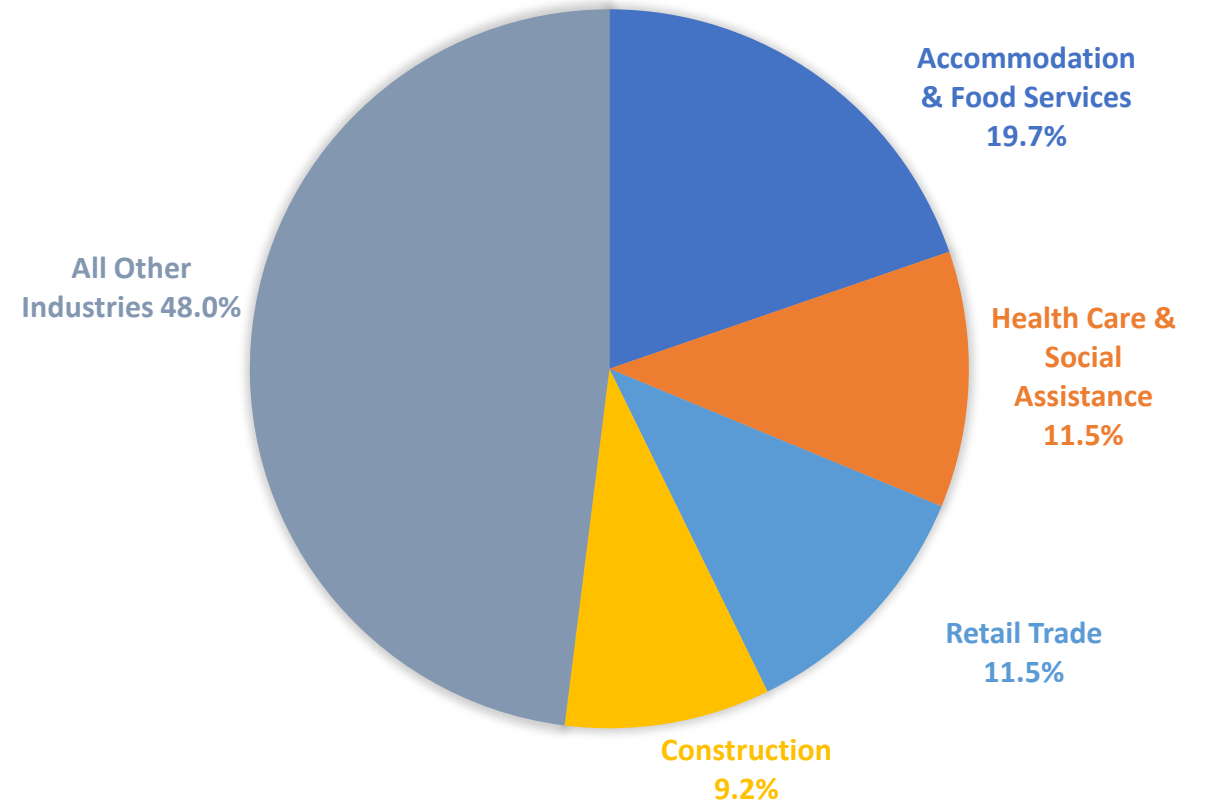


Unemployment Insurance Claims

Louisiana Statewide UI Claims by Industry

Statewide, as of July 18, 2020, the hardest-hit industries in terms of lost jobs have been:

- **Accommodation & Food Service**, representing 19.7% of all claims filed;
- **Health Care and Social Assistance** (11.6%);
- **Retail Trade** (11.6%); and
- **Construction** (9.2%).

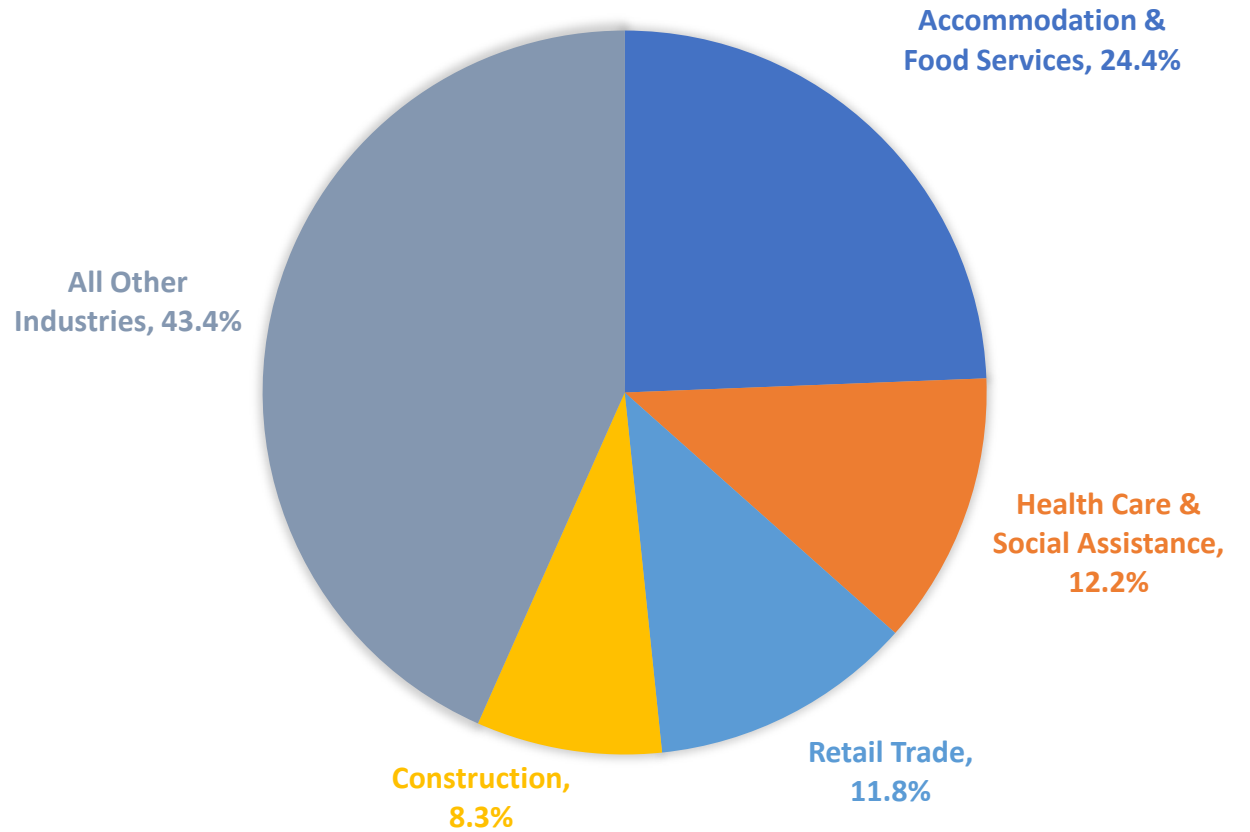


Source: Louisiana Workforce Commission



St. Tammany Economic Makeup

Statewide, the hardest-hit industries during the pandemic, as shown on the previous page, have been proportional to St. Tammany's industrial makeup.

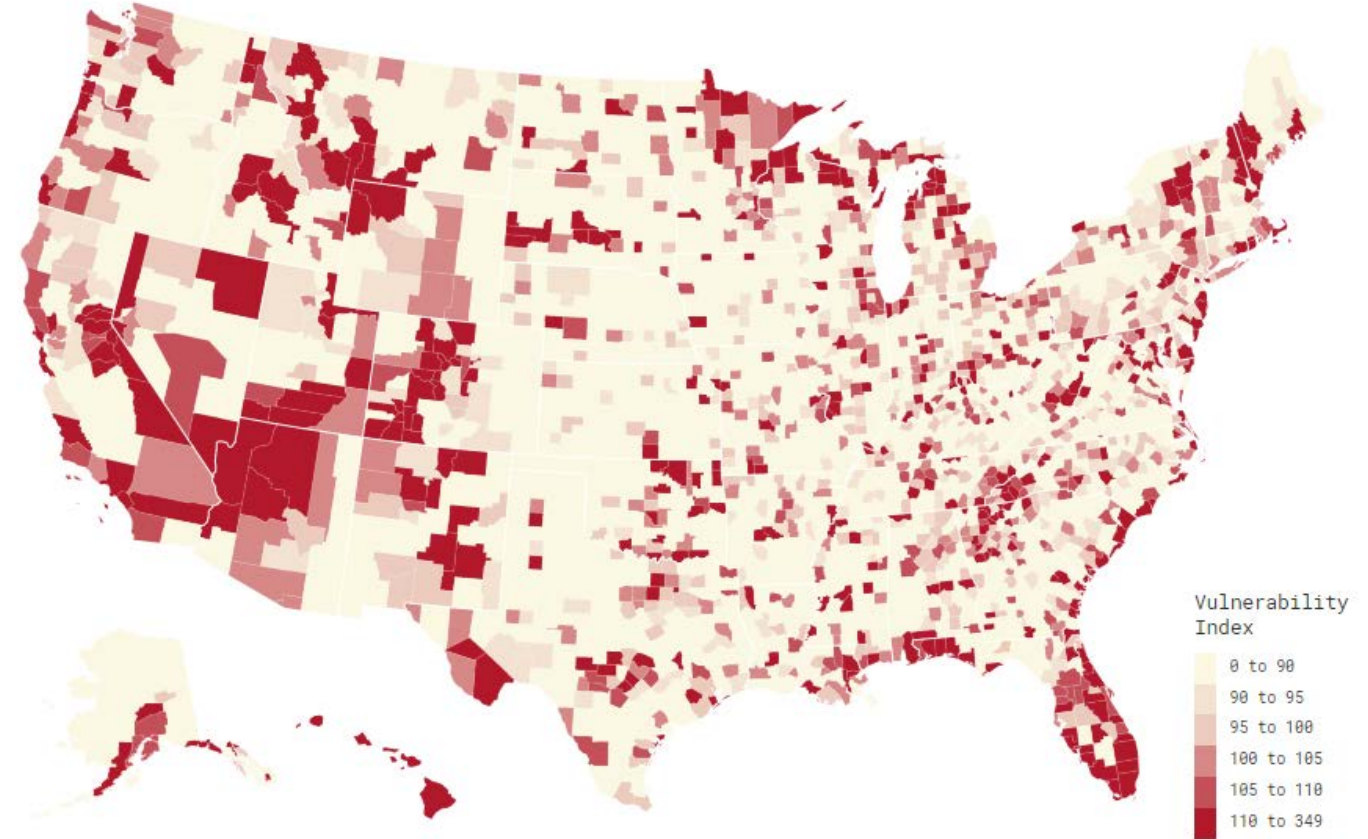


Source: EMSI



COVID-19 Vulnerability Index

- The **Vulnerability Index** is a measurement of the negative impact that the pandemic can have on employment based upon a region's industrial and economic makeup.
- For example, Accommodation & Food Services are projected to lose more jobs as a result of the coronavirus (over half of jobs lost, on average) compared to other industries that are expected to have mild or no job contractions.
 - As shown on the previous page, Accommodation & Food Service jobs make up nearly one quarter of all jobs in St. Tammany.
- The average county Vulnerability Index score is 100, representing the average job loss expected in the United States. Higher scores indicate the degree to which job losses may be greater.
- *St. Tammany's Index score: 117.44 – highly vulnerable*
 - **17.44%** higher than the national average for potential job loss
- *St. Tammany's Ranking: 279th most vulnerable out of 3,141 counties in the U.S.*
 - **Top 10%** most vulnerable counties/county-equivalents



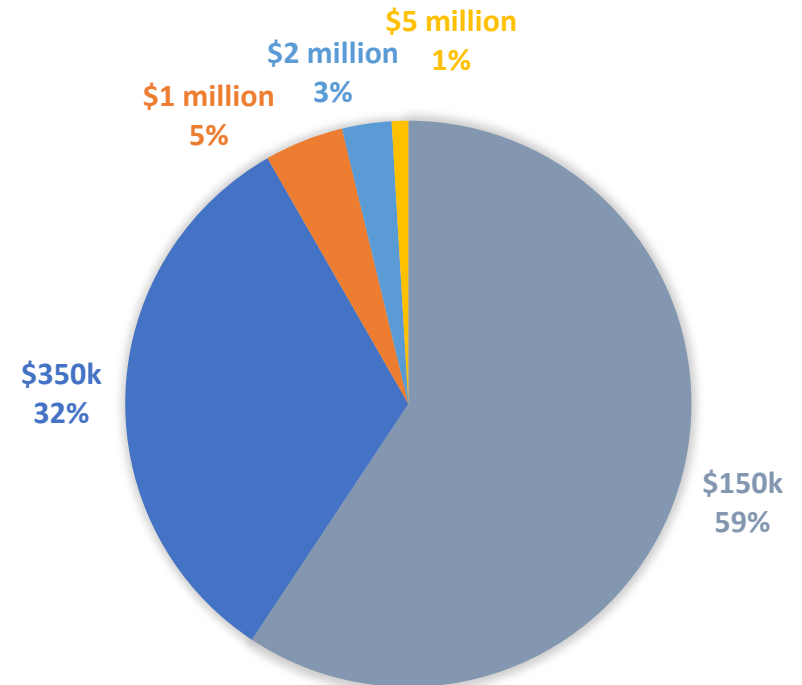
Source: Chmura Economics/JobEQ | COVID-19 Vulnerability Index



Paycheck Protection Program Loans

- The Paycheck Protection Program is a \$660 billion small business loan program created by the CARES Act that was designed to provide small businesses with eight weeks of payroll and other costs to keep them afloat during the pandemic.
- In St. Tammany, **532** businesses received PPP loans of **at least \$150,000**, saving an estimated **26,579** jobs.
- The average loan size was **\$700,000**, with some loans ranging up to **\$5 million**.
- Statewide, **73,800** Louisiana businesses and organizations received **\$7.3 billion** in federal PPP loans.

PPP Loan Range Distribution in St. Tammany

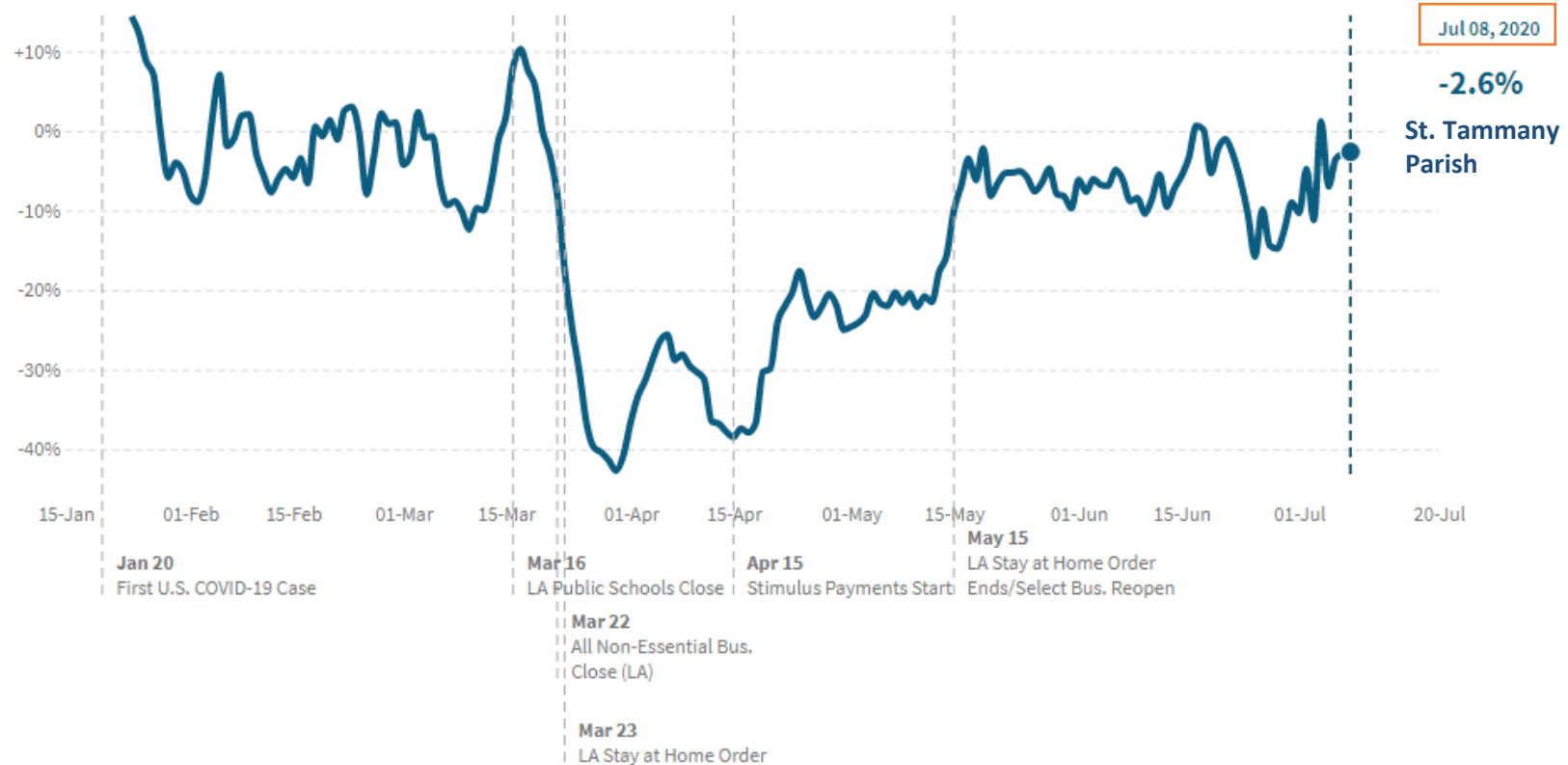


Source: U.S. Treasury



Changes in Consumer Spending

- Consumer spending began to take a dive following school closures in Louisiana, and while making a rocky path to recovery, has nearly returned to pre-COVID-19 levels.
- As of July 8, 2020, total consumer spending in St. Tammany **decreased by 2.6%** compared to January 2020.
- The lowest point was April 1, when consumer spending was at **-42.7%**.
- The steepest increases in spending can be seen immediately following the distribution of direct stimulus payments and the end of the stay-at-home order/beginning of Phase I.

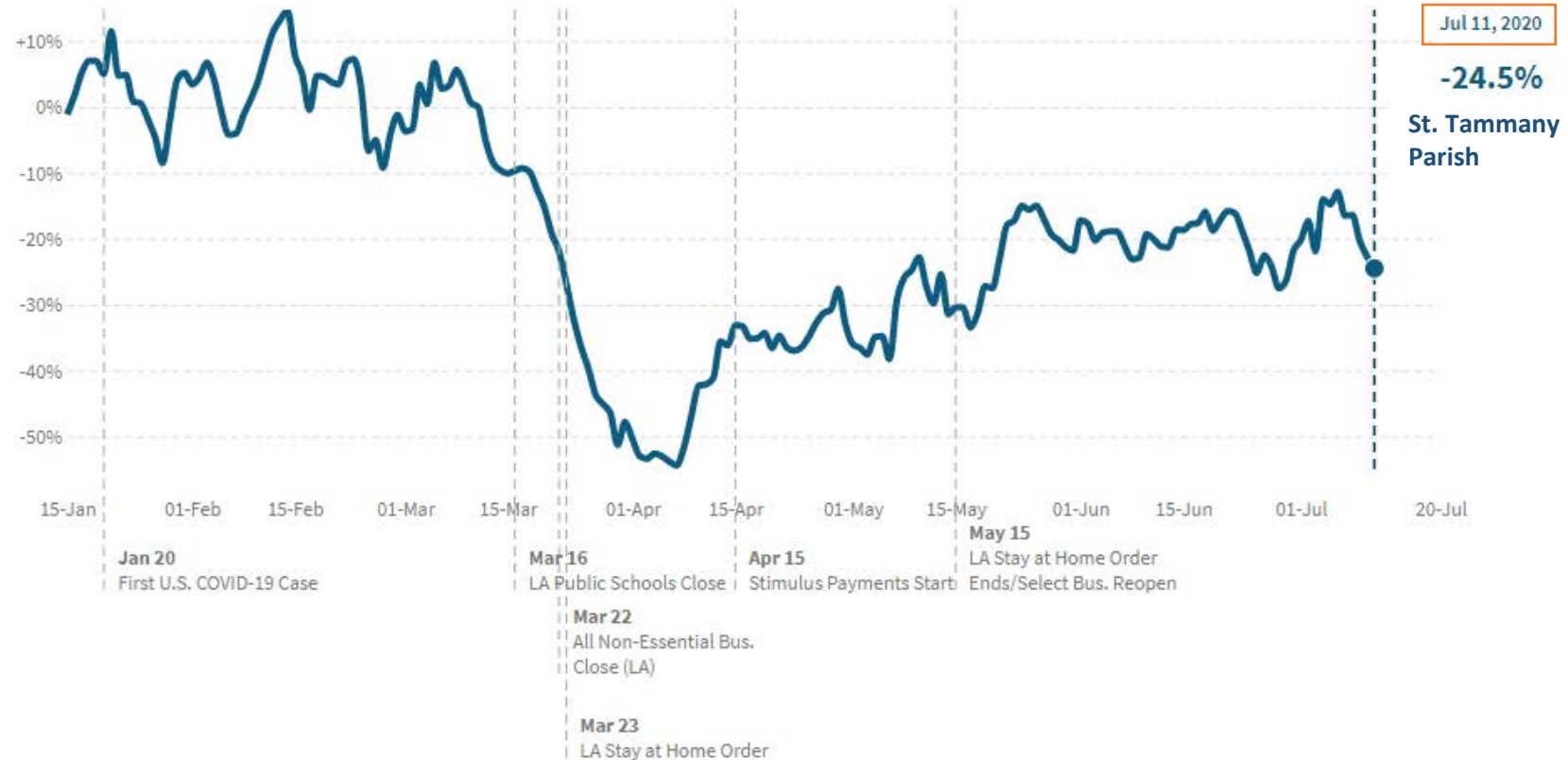


Source: Opportunity Insights Economic Tracker



Changes in Small Business Revenue

- Small business revenue began to take a dive around the time of the stay-at-home order, and while making a slow recovery, has not yet returned to pre-COVID-19 levels.
- As of June 30, 2020, total small business revenue in St. Tammany **decreased by 24.5%** compared to January 2020.
- The lowest point was April 8, when revenue was at **-51.1%**.
- The steepest increase in small business revenue can be seen following the end of the statewide stay-at-home order.



Source: Opportunity Insights Economic Tracker



Sales Tax Collections

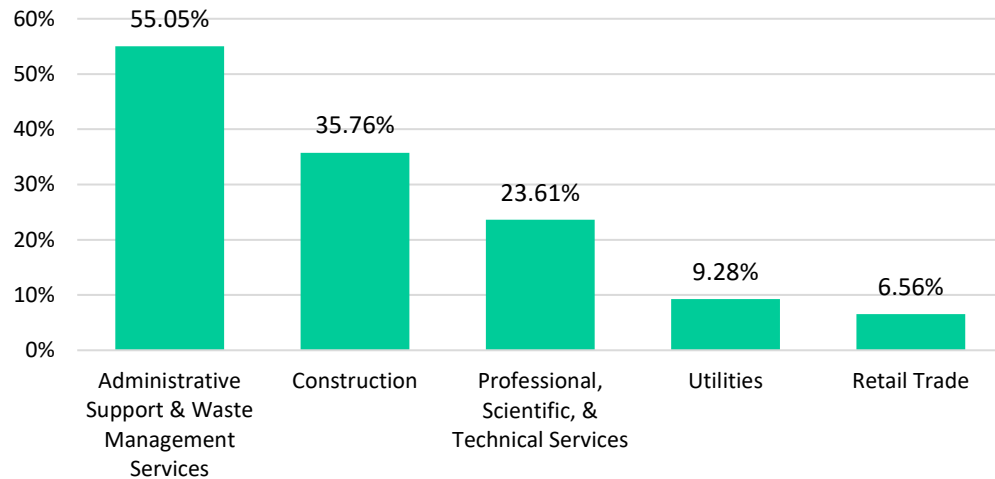
April 2019 vs. April 2020

The graph below shows the industries that demonstrated the greatest increase in sales tax revenue in April 2020 compared to April 2019.

Note: Sales tax collections occur the month after the sales take place, with disbursements to jurisdictions occurring the month after that. For example, May sales, collected in June, will not be disbursed or reported until July.

Not all industry sectors are represented in this graph.

Industries with Greatest Growth in Sales Tax Revenue



Industry Examples:

- **Administrative Support & Waste Management Services:** office administrative services, facilities support services, temporary help services, waste collection/treatment
- **Construction:** commercial and residential construction, renovations
- **Professional, Scientific, & Technical Services:** legal, accounting, computer/IT, architecture, engineering, advertising, publishing
- **Utilities:** communications, electricity, gas, water, sewer
- **Retail Trade:** gas stations, grocery stores, all other stores that serve personal, household, or business needs

Source: St. Tammany Parish Sheriff's Office



Sales Tax Collections

April 2019 vs. April 2020

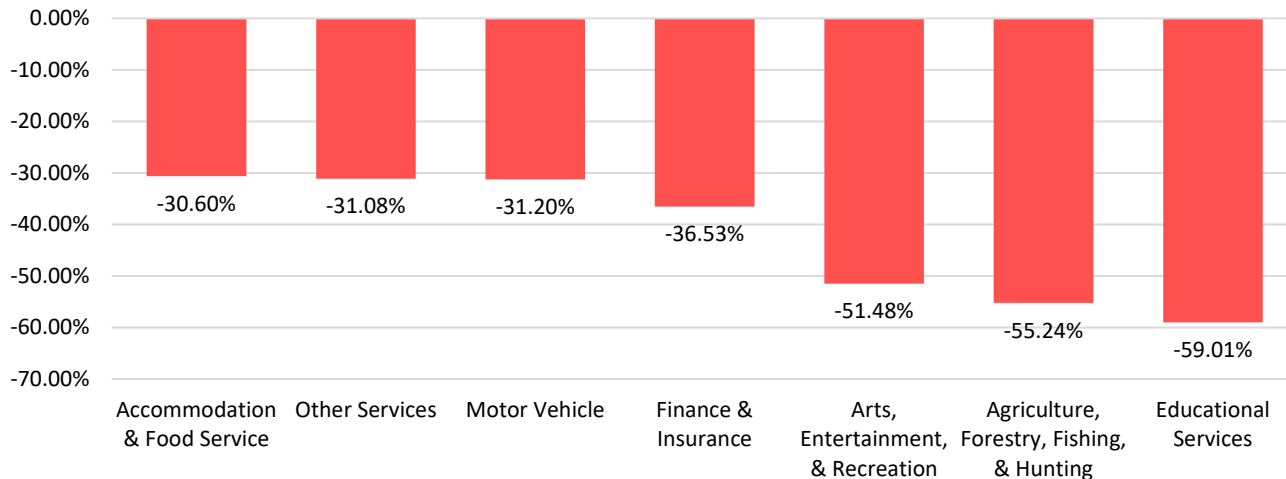
The graphs below show the industries that demonstrated the greatest loss in sales tax revenue in April 2020 compared to April 2019.

More industry sectors lost revenue than increased revenue compared to April 2019. Three industry sectors saw losses of over 50%.

Note: Sales tax collections occur the month after the sales take place, with disbursements to jurisdictions occurring the month after that. For example, May sales, collected in June, will not be disbursed or reported until July.

Not all industry sectors are represented in this graph.

Industries with Greatest Loss in Sales Tax Revenue



Industry Examples:

- **Accommodation & Food Service:** Hotels, restaurants, bars
- **Other Services:** all commonly thought-of service establishments: hair/nail salons, housekeeping, dry cleaning, repairs/maintenance
- **Motor Vehicle:** auto, boat, motorcycle, truck, trailer sales
- **Finance & Insurance:** banks, insurance agencies, credit intermediaries
- **Arts, Entertainment, & Recreation:** performing arts, spectator sports, museums, and other recreation
- **Agriculture, Forestry, Fishing, & Hunting:** farming, aquaculture, logging
- **Educational Services:** schools and training institutions

Source: St. Tammany Parish Sheriff's Office



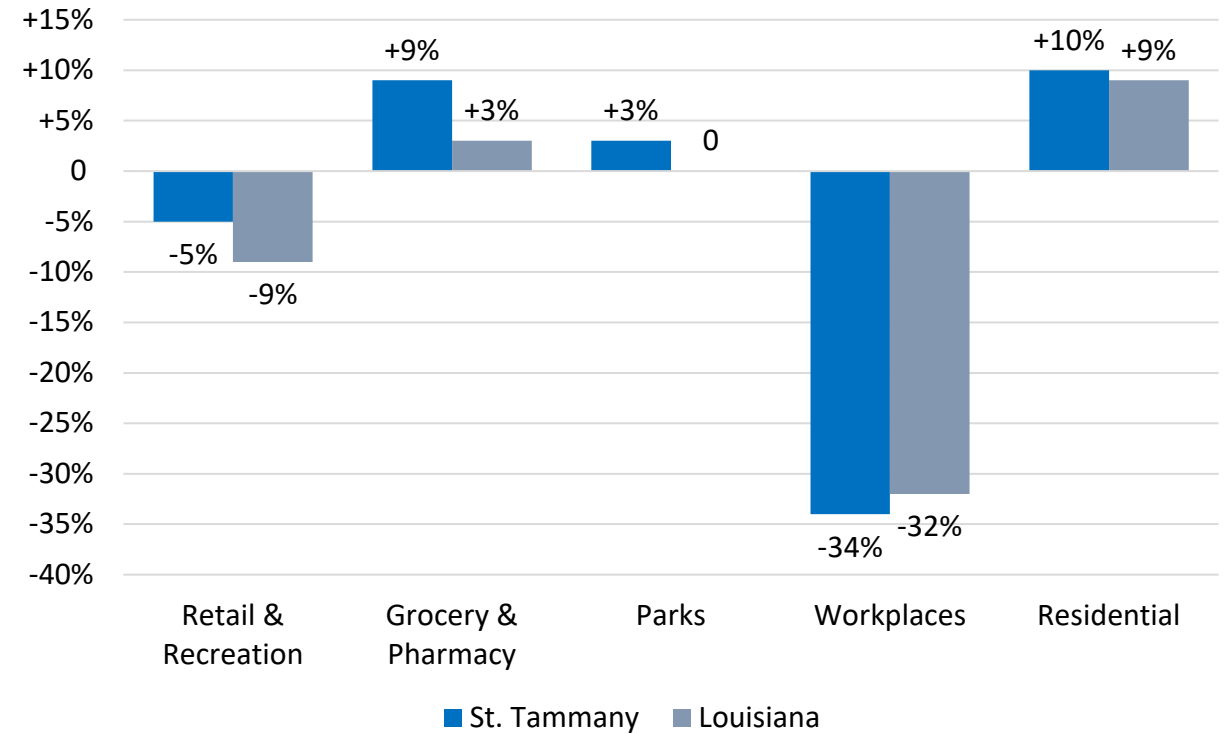
Residential Travel Since Stay-at-Home Order

The purpose of the community mobility report is to give insight into key questions:

- How have travel and mobility in St. Tammany been impacted by the pandemic?
- How well has St. Tammany adhered to the stay-at-home order?
- Where are people going when they aren't going to work, going shopping, or doing leisure/entertainment activities?

Definitions:

- **Retail & Recreation:** places like restaurants, cafes, shopping centers, theme parks, museums, libraries, and movie theaters
- **Grocery & Pharmacy:** places like grocery markets, food warehouses, farmers markets, specialty food shops, drug stores, and pharmacies
- **Parks:** places like national parks, public beaches, marinas, dog parks, plazas, and public gardens
- **Workplaces:** places of work
- **Residential:** places of residence
- Negative percentages indicate reduction in travel



Source: Google | COVID-19 Community Mobility Report – July 2020



Key Takeaways

- St. Tammany's COVID-19 positive case curve continues to slope more steeply upward as positive cases accelerate past 4,000.
- More than 35% of St. Tammany's workforce has been unemployed at some point since the start of the pandemic's effects on the economy, and the unemployment rate still hovers above 12.0%.
- St. Tammany's industrial makeup renders the economy particularly vulnerable to the effects of the pandemic, with accommodations & food service, retail, and other service jobs comprising a significant portion of the economy.
- The economy, although no longer shut down, is making a slow recovery, with small business revenues still down nearly a quarter and a significantly lower rate of participation in the labor force.





**ST. TAMMANY
CORPORATION**

The Economic Development Organization for St. Tammany

The **AnalyST**

St. Tammany Corporation's economic research publication

 [@StTammanyCorporation](https://www.facebook.com/StTammanyCorporation)

 [@StTammanyCorp](https://twitter.com/StTammanyCorp)

 [StTammanyCorp.org](https://www.StTammanyCorp.org)

Prepared by:
Elizabeth Lee
Research Analyst &
Economic Development Specialist
elee@sttammanycorp.org